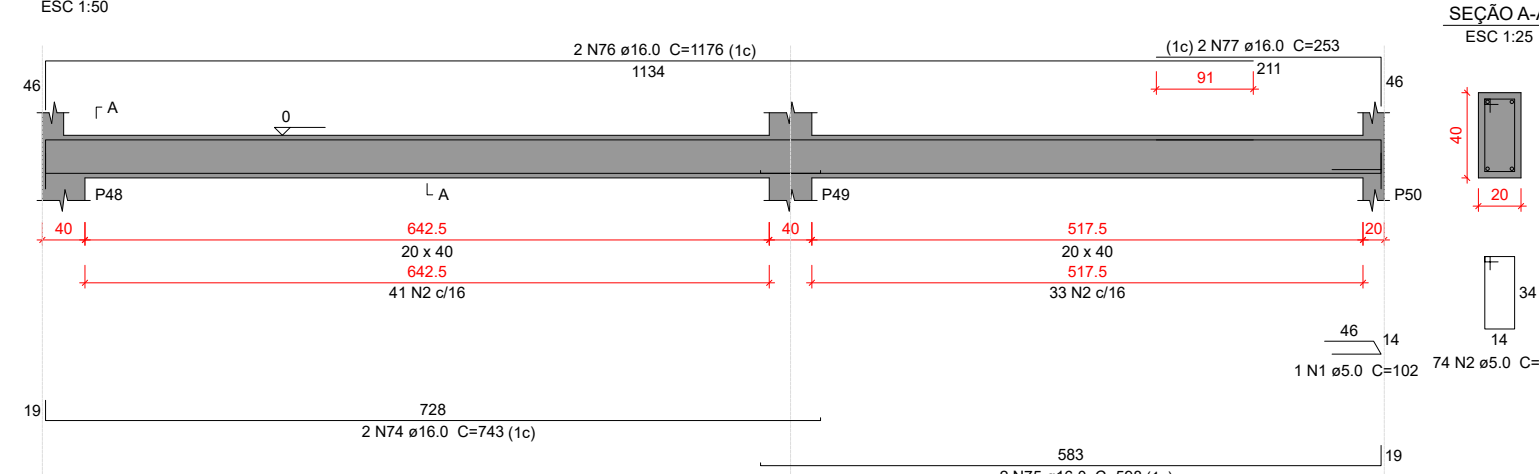
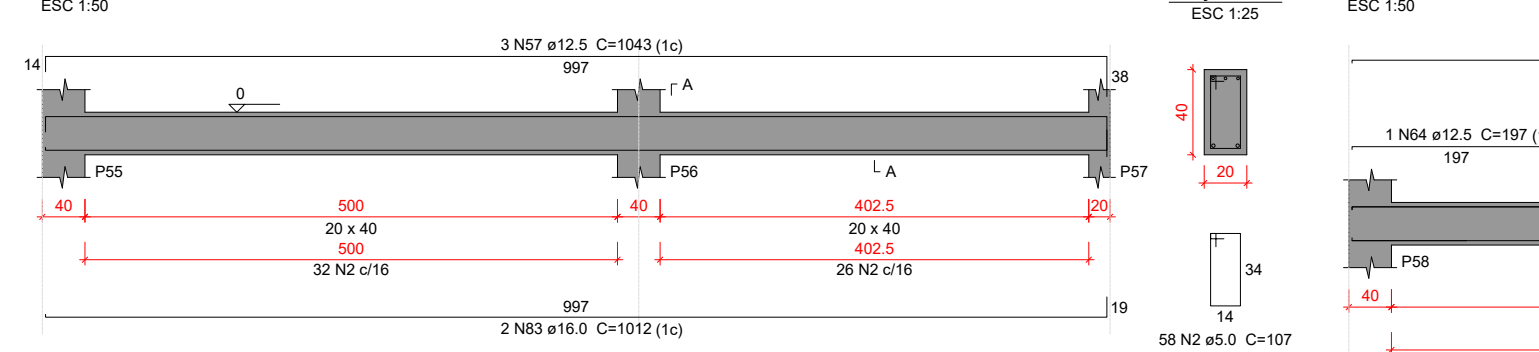


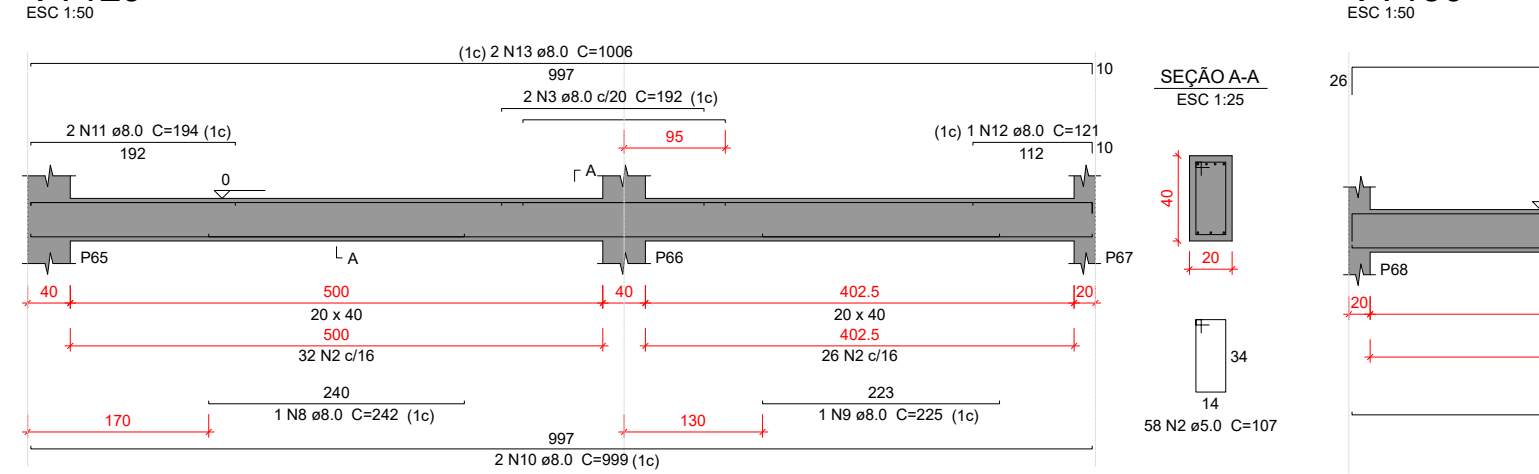
VT122



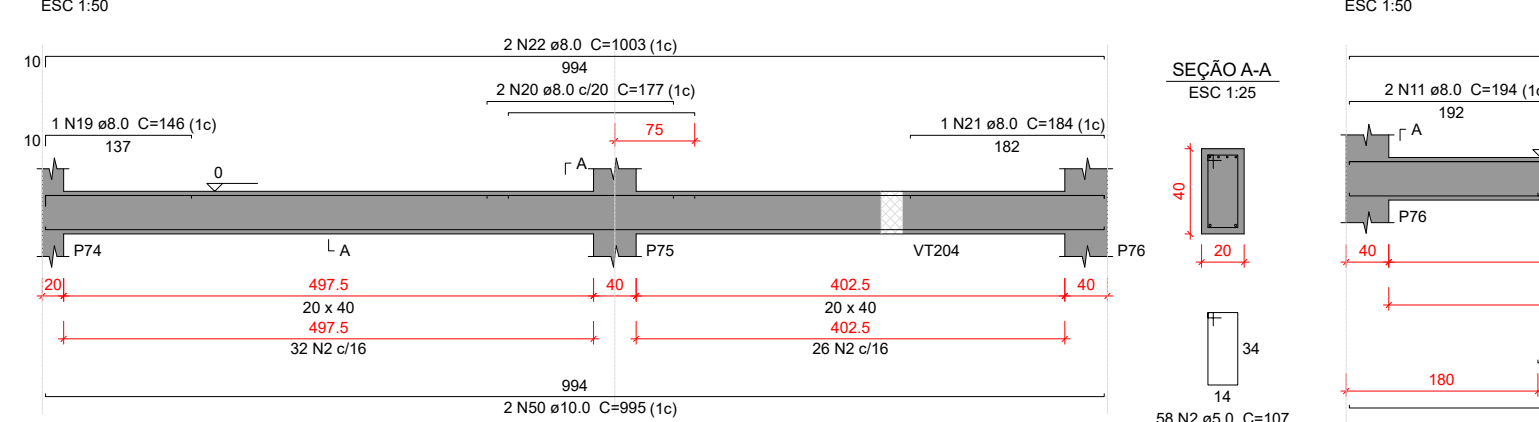
VT125



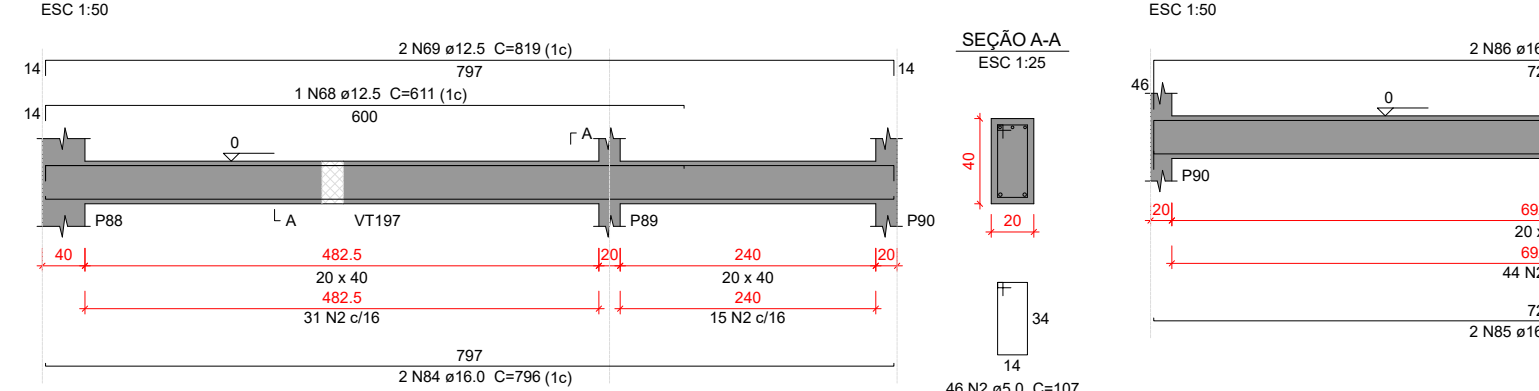
VT129



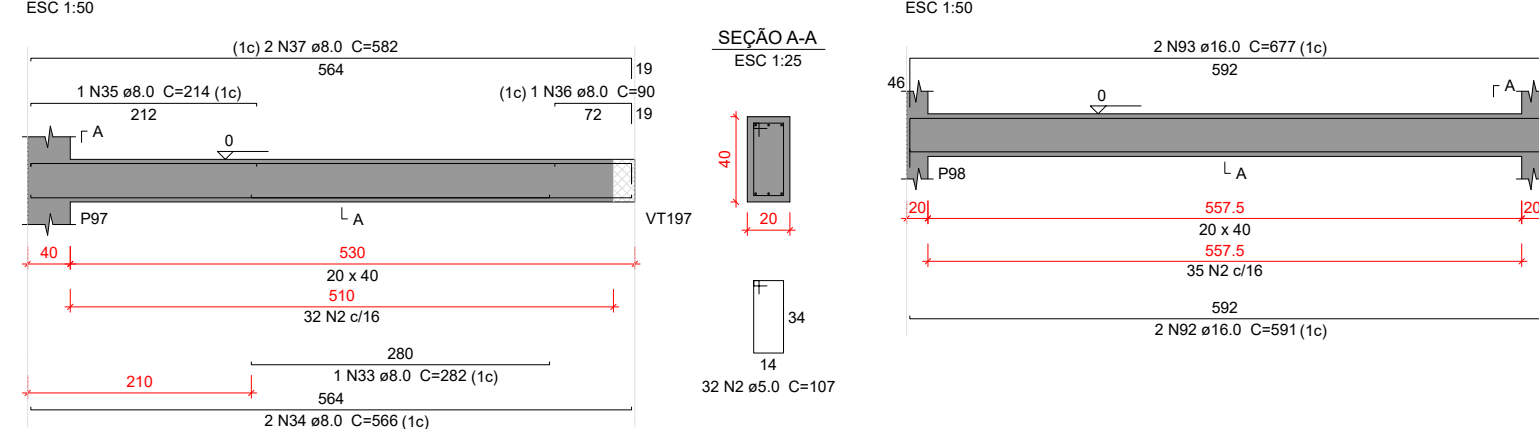
VT133



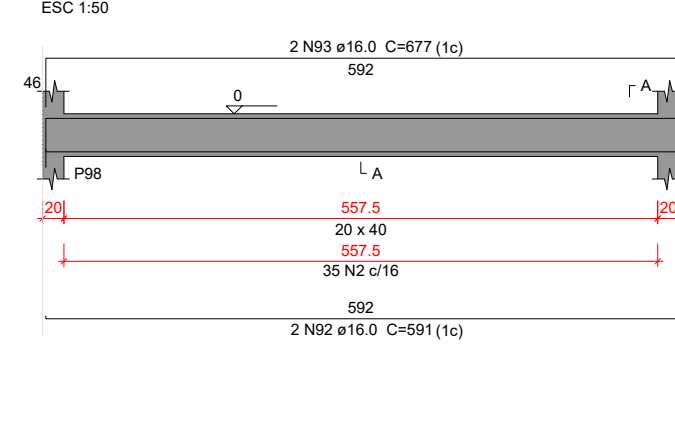
VT137



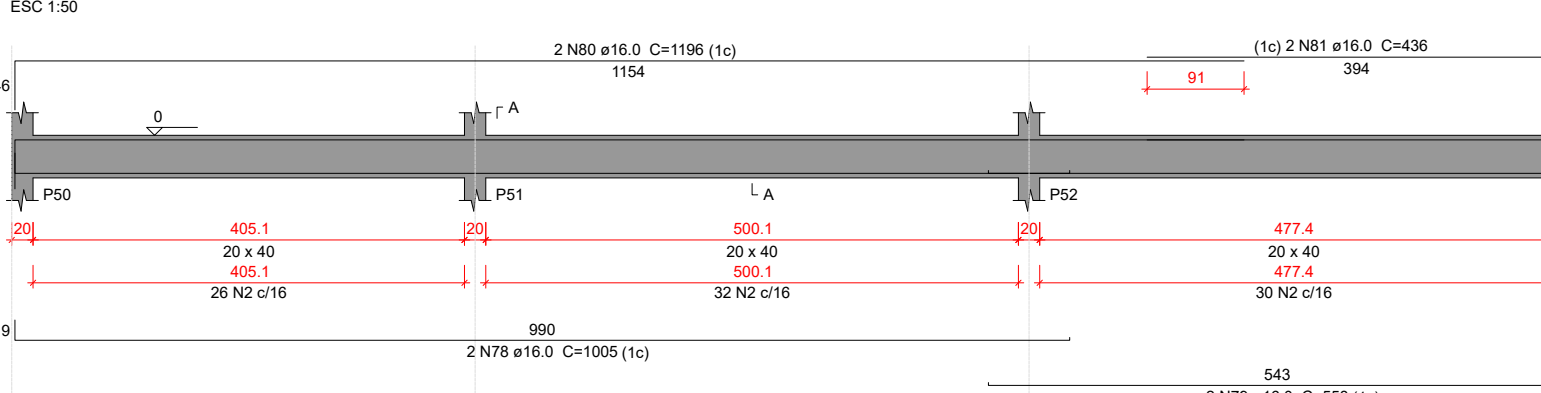
VT142



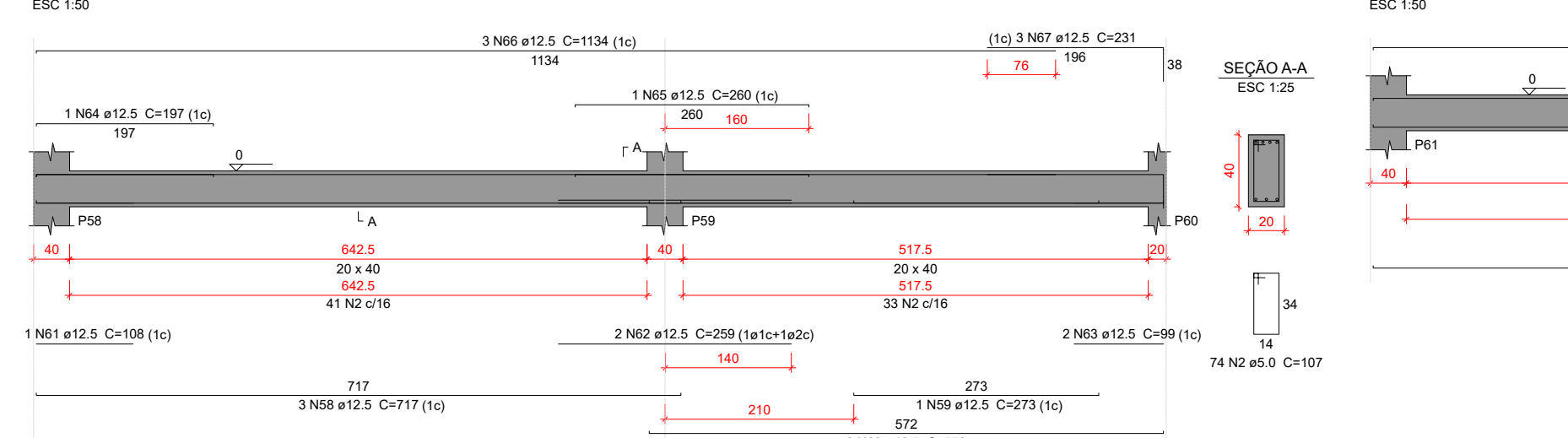
VT143



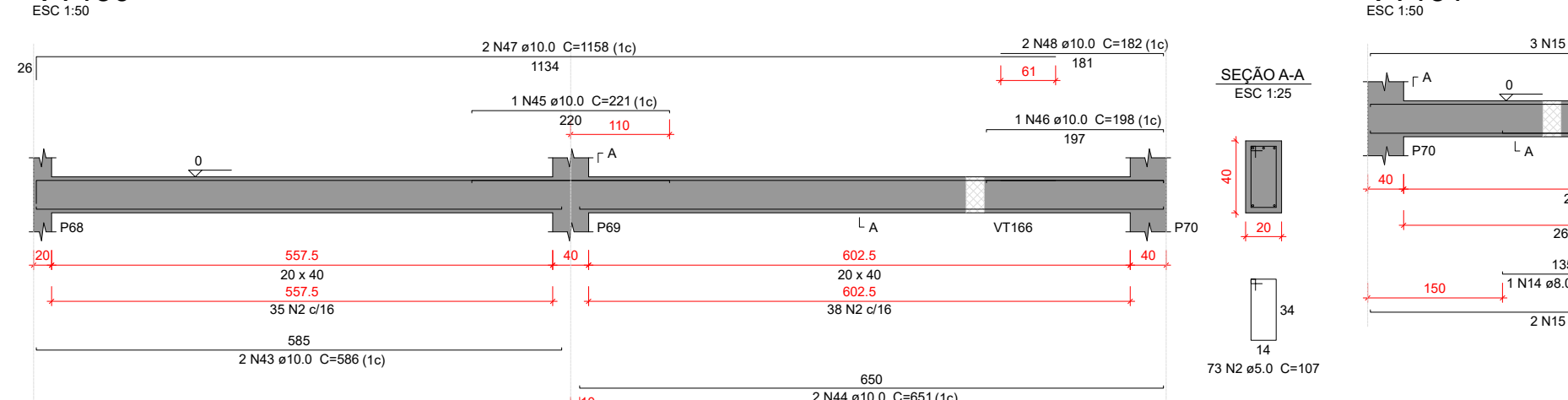
VT123



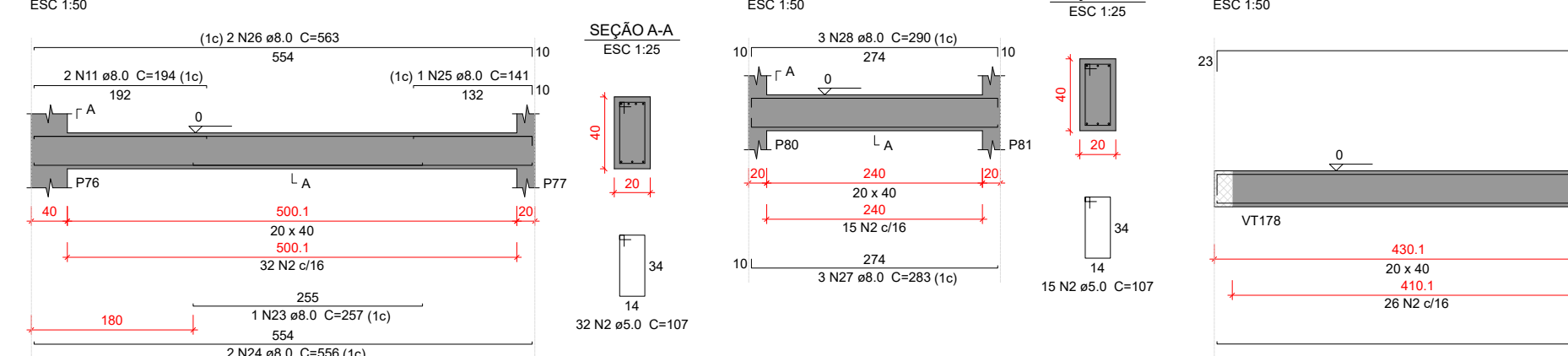
VT126



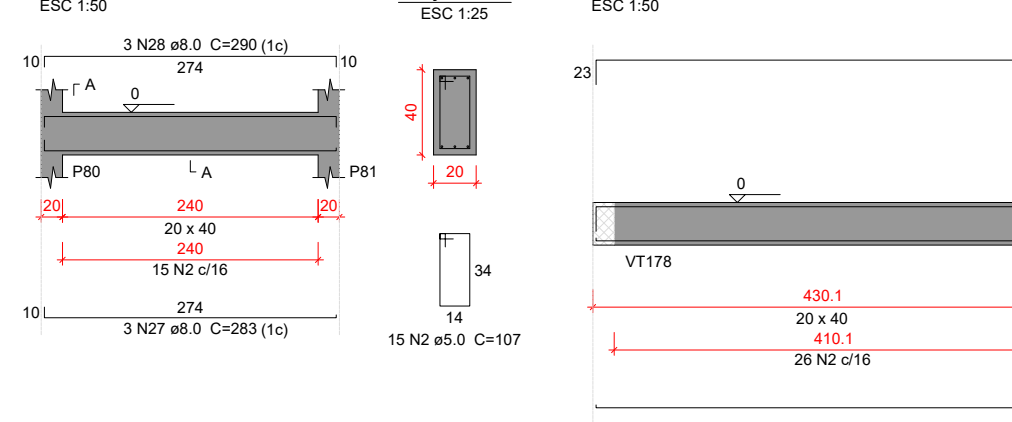
VT130



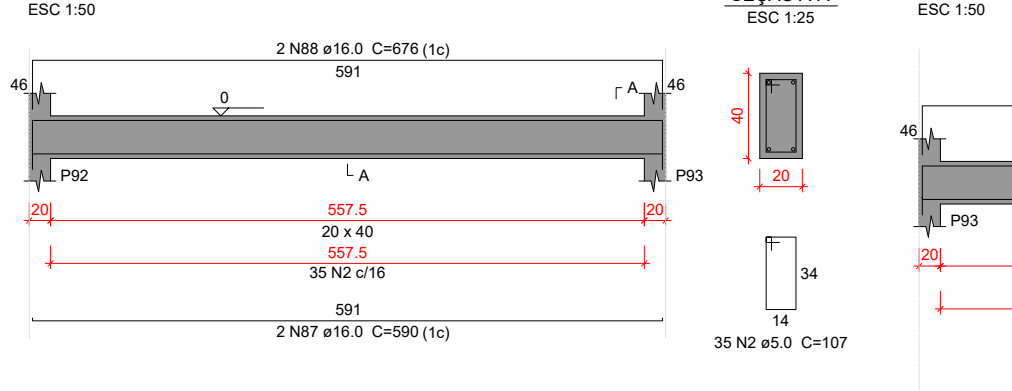
VT134



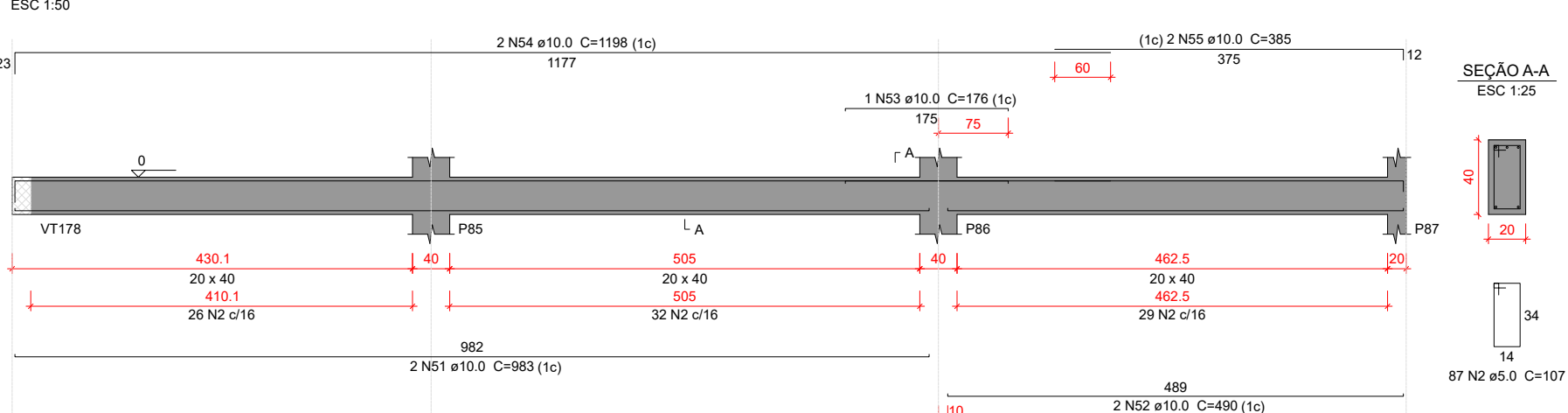
VT135



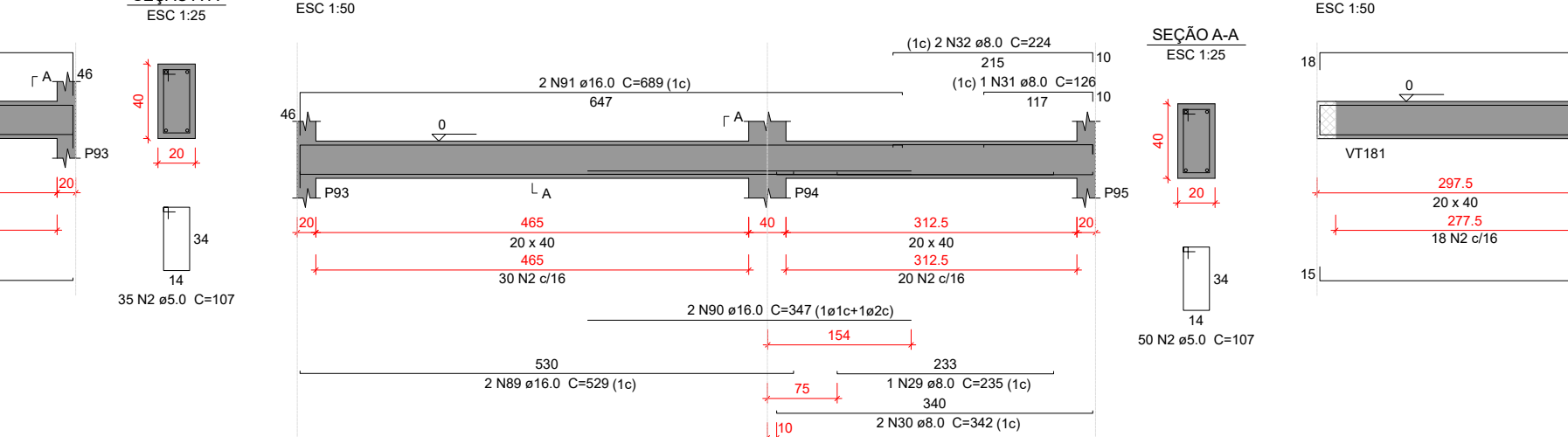
VT139



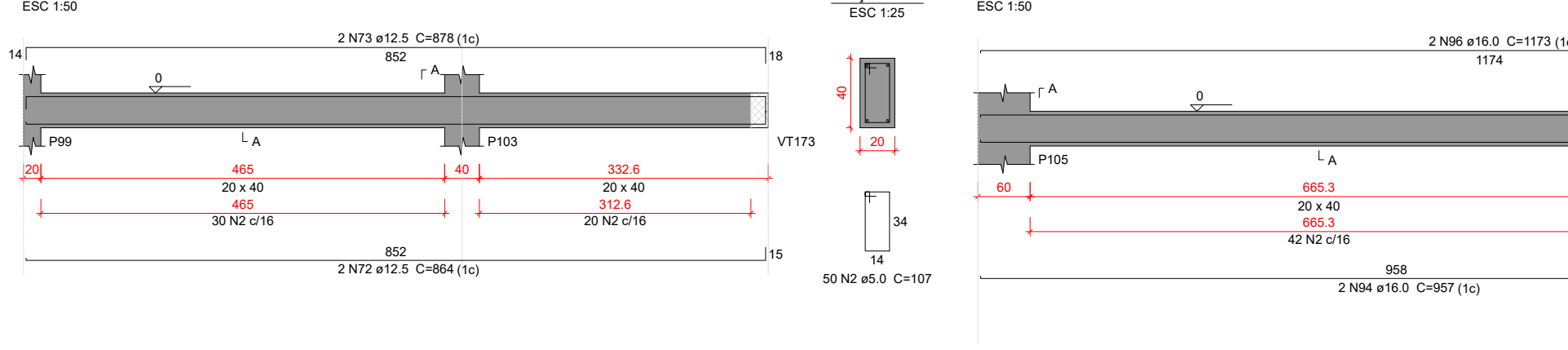
VT136



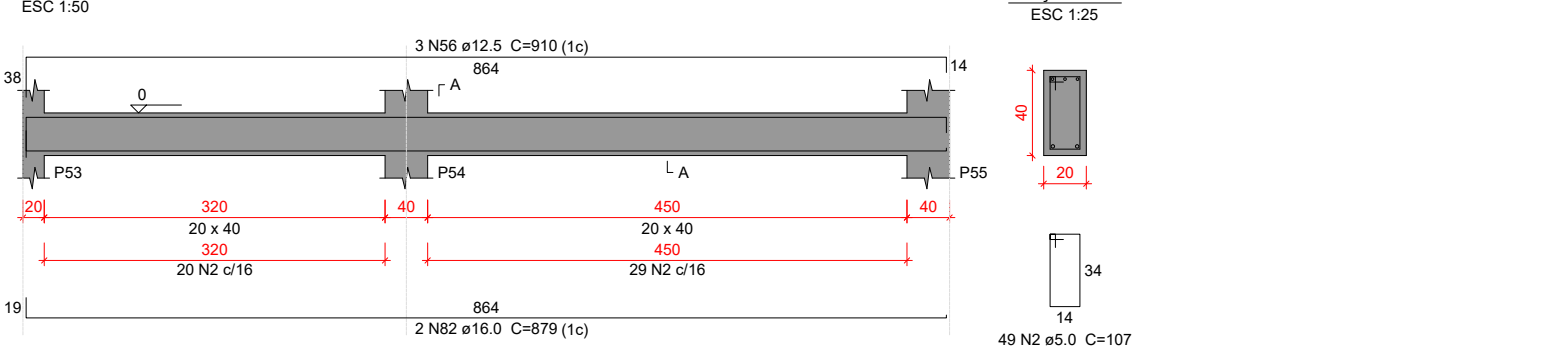
VT140



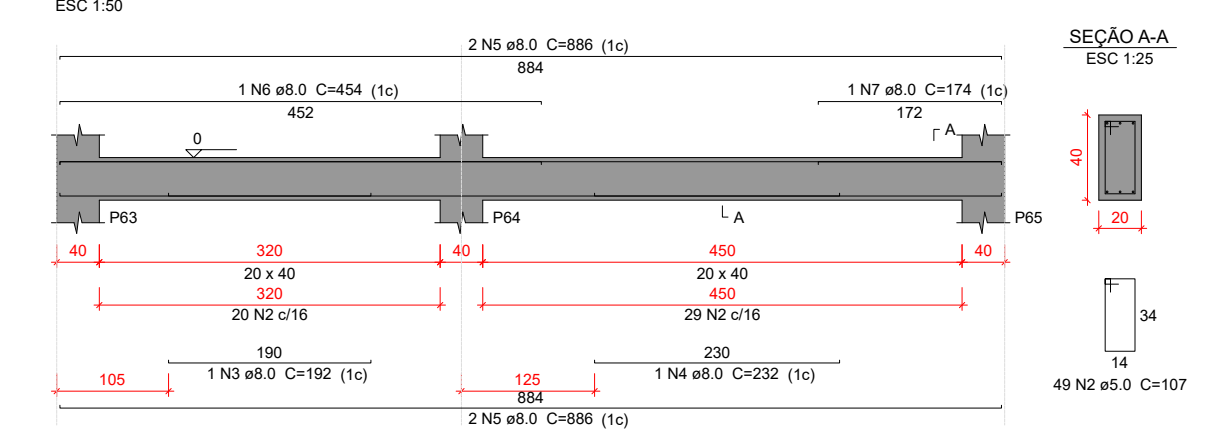
VT145



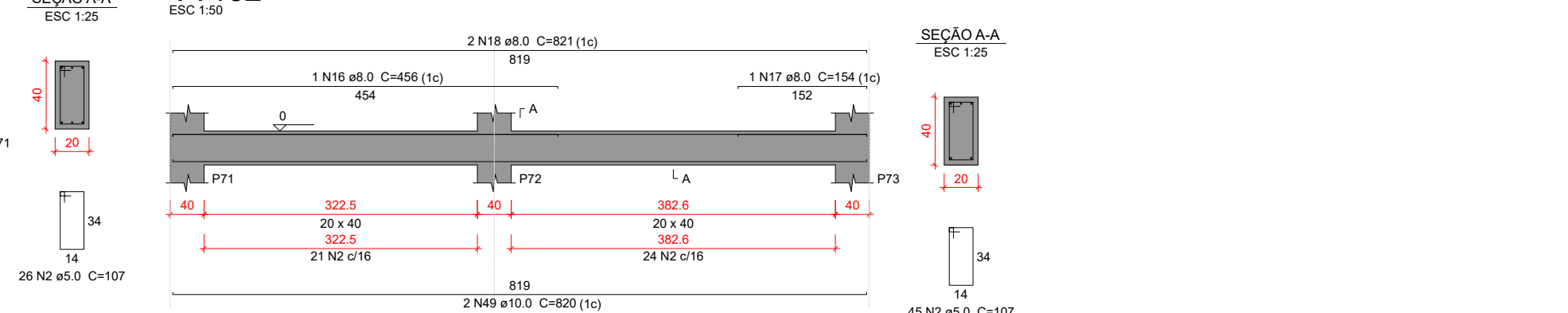
VT124



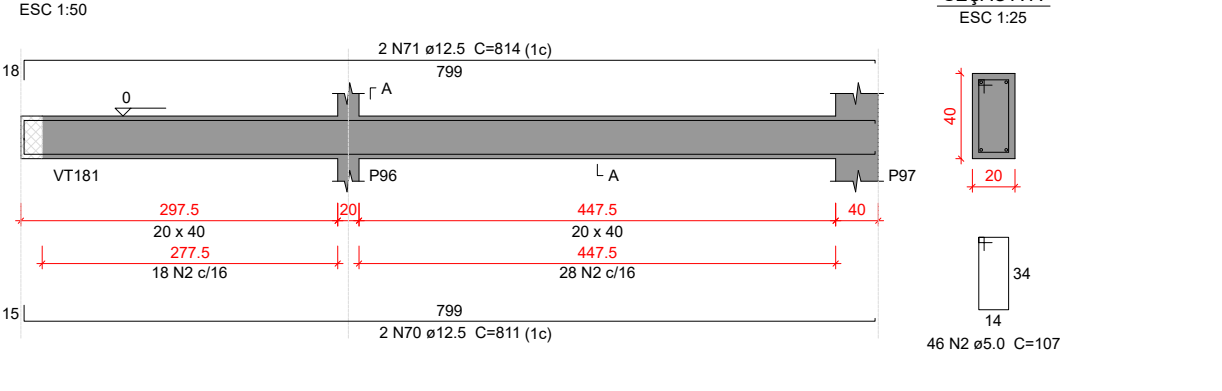
VT128



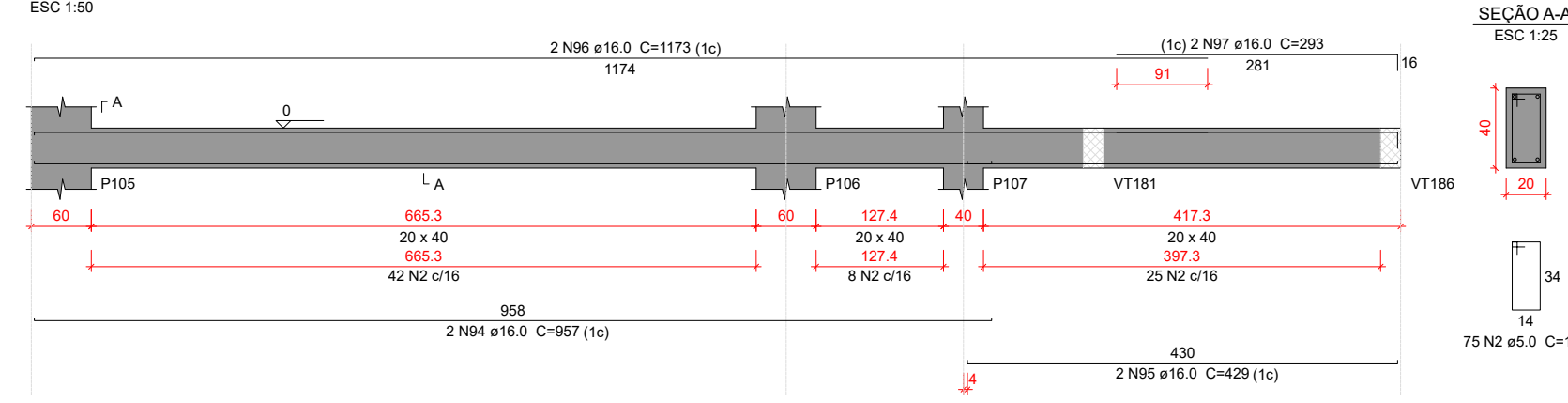
VT132



VT141



VT146



Relação do aço

AÇO	N	DIAM (mm)	QUANT	C UNIT (cm)	C TOTAL (cm)
CA50	1	16.0	1	162	162
CA50	2	5.0	1289	107	137923
CA50	3	8.0	3	192	576
CA50	4	8.0	1	232	232
CA50	5	8.0	4	886	3544
CA50	6	8.0	4	454	1816
CA50	7	8.0	1	174	174
CA50	8	8.0	1	242	242
CA50	9	8.0	1	225	225
CA50	10	8.0	2	999	1998
CA50	11	8.0	4	194	776
CA50	12	8.0	1	121	121
CA50	13	8.0	2	1006	2012
CA50	14	8.0	1	137	137
CA50	15	8.0	5	481	2405
CA50	16	8.0	1	456	456
CA50	17	8.0	1	154	154
CA50	18	8.0	2	821	1642
CA50	19	8.0	1	146	146
CA50	20	8.0	2	177	354
CA50	21	8.0	1	184	184
CA50	22	8.0	2	1003	2006
CA50	23	8.0	1	257	257
CA50	24	8.0	2	563	1126
CA50	25	8.0	1	141	141
CA50	26	8.0	3	263	789
CA50	27	8.0	3	290	870
CA50	28	8.0	2	236	472
CA50	29	8.0	2	342	684
CA50	30	8.0	1	126	126
CA50	31	8.0	2	224	448
CA50	32	8.0	1	282	282
CA50	33	8.0	1	282	282
CA50	34	8.0	2	596	1192
CA50	35	8.0	1	214	214
CA50	36	8.0	1	90	90
CA50	37	8.0	2	582	1164
CA50	38	8.0	3	543	1629
CA50	39	8.0	1	186	186
CA50	40	8.0	1	56	56
CA50	41	8.0	2	550	1100
CA50	42	10.0	4	1033	4132
CA50	43	10.0	2	588	1176
CA50	44	10.0	2	651	1302
CA50	45	10.0	1	221	221
CA50	46	10.0	1	198	198
CA50	47	10.0	2	1158	2316
CA50	48	10.0	2	182	364
CA50	49	10.0	2	820	1640
CA50	50	10.0	2	985	1970
CA50	51	10.0	2	983	1966
CA50	52	10.0	2	490	980
CA50	53	10.0	2	176	352
CA50	54	10.0	2	1198	2396
CA50	55	10.0	2	385	770
CA50	56	12.5	3	910	2730
CA50	57	12.5	3	1043	3129
CA50	58	12.5	3	717	2151
CA50	59	12.5	1	273	273
CA50	60	12.5	2	572	1144
CA50	61	12.5	1	108	108
CA50	62	12.5	2	259	518
CA50	63	12.5	2	99	198
CA50	64	12.5	1	197	197
CA50	65	12.5	1	280	280
CA50	66	12.5	3	1134	3402
CA50	67	12.5	3	231	693
CA50	68	12.5	1	811	811
CA50	69	12.5	2	819	1638
CA50	70	12.5	2	811	1622
CA50	71	12.5	2	814	1628
CA50	72	12.5	2	864	1728
CA50	73	12.5	2	878	1756
CA50	74	16.0	2	743	1486
CA50	75	16.0	2	598	1196
CA50	76	16.0	2	1175	2350
CA50	77	16.0	2	253	506
CA50	78	16.0	2	1005	2010
CA50	79	16.0	2	558	1116
CA50	80	16.0	2	1196	2392
CA50	81	16.0	2	436	872
CA50	82	16.0	2	879	1758
CA50	83	16.0	2	1012	2024
CA50	84	16.0	2	796	1592
CA50	85	16.0	2	726	1452
CA50	86	16.0	2	812	1624
CA50	87	16.0	2	590	1180
CA50	88	16.0	2	676	1352
CA50	89	16.0	2	529	1058
CA50	90	16.0	2	347	694
CA50	91	16.0	2	689	1378
CA50	92	16.0	2	591	1182
CA50	93	16.0	2	677	1354
CA50	94	16.0	2	567	1134
CA50	95	16.0	2	429	858
CA50	96	16.0	2	1173	2346
CA50	97	16.0	2	293	586

Resumo do aço

AÇO	DIAM (mm)	C.TOTAL (m)	PESO + 10 % (kg)
CA50	8.0	295.4	128.2
	10.0	196.3	133.1
	12.5	237.9	252.1
	16.0	342.9	595.2
CA60	5.0	1380.3	234
PESO TOTAL (kg)			
CA50	1108.5		
CA60	234		

Volume de concreto (C-35) = 18.23 m³  
Área de forma = 202.93 m²